



2nd Asian Palaeontological Congress

— *Science in deep time in a new epoch* —

Final Circular



3rd – 7th August
2023 Tokyo, Japan



CONTENTS

| | |
|---|----|
| CODE OF CONDUCT | 3 |
| FOR THE RESPECT TO ALL | 3 |
| NURSERY | 4 |
| WiFi AT THE VENUE | 4 |
| INSURANCE | 4 |
| GETTING TO TOKYO | 5 |
| RECEPTION AND REGISTRATION SCHEDULE | 7 |
| VENUE | 8 |
| TIMETABLE | 11 |
| FLOOR MAP OF CONFERENCE HALLS | 13 |
| ORAL PRESENTATIONS | 14 |
| POSTER PRESENTATIONS | 15 |
| BANQUET | 16 |
| FIELD EXCURSIONS | 16 |
| EXHIBITIONS | 20 |
| REGISTRATION | 21 |
| CANCELATION AND REFUND POLICY | 21 |
| INTERNATIONAL SCIENTIFIC COMMITTEE | 22 |
| KEY DATES | 24 |
| CONTACT ADDRESS | 24 |



We will meet in a month for sharing the wonder of palaeontology.

We are looking forward to seeing all the participants on-site and on-line.

To maximise your achievement, please read carefully the following information.

CODE OF CONDUCT

It is expected that meeting attendees respect other people's rights regardless of gender, age, physical appearance, etc. Harassments and abusive behaviours will not be tolerated, either in personal or electronic interactions.

Vaccination certificates and pre-departure tests are no longer required to enter Japan. For the current border measures taken by Japanese government, see the Ministry of Foreign Affairs website, https://www.mofa.go.jp/ca/cp/page22e_000925.html.

FOR THE RESPECT TO ALL

We kindly request all participants to acknowledge the following guidelines.

- Avoid bringing in large luggage/suitcases into the conference room; there is no luggage depository on-site.
- Smoking is strictly prohibited in and around the venue including the city pavement, except for the designated smoking rooms.
- Please keep your rubbish with you until you find a litter bin.
- Please switch off your mobile phone or turn it to silent mode in the conference halls.
- Discussion should be courteous and respectful in English.
- Do not record/photograph the presentation without the author's prior permission.
- Never post any images or video on the internet without permission of the authors or persons on the images/video.
- Please respect any request from authors to not disseminate the contents of their presentation.

NURSERY

The APC2 organising committee will provide a day nursery on the Hongo campus, Univ. Tokyo, during the congress. Any participant is welcome to use the nursery service. Please be aware that the maximum number of children we can accept at a given time is eight, and the service is provided on a “first come, first served” basis. If it’s full, please visit the nursery room again later.

Reservation: We do not take reservations. Please visit the nursery room when you need it.

Fare: Free of charge.

Open hours: 4th (Friday) from 8:30 through 18:00

5th (Saturday) from 8:30 through 18:00

6th (Sunday) from 8:30 through 17:30

7th (Monday) from 8:30 through 18:00

Place: Faculty of Science 2nd. The room Number is to be determined.

WiFi AT THE VENUE

[eduroam] connection will be provided at the venue. Please configure your internet connection via [eduroam] before leaving your country. Unless you configure your connection in your country/institute, you may not be able to log on to [eduroam] at the venue.

For persons who do not have a license to access [eduroam], APC2 organising committee will provide guest accounts accessible to the University of Tokyo’s network. ID and password of the guest accounts will be provided at the registration desk.

INSURANCE

APC2 organising committee cannot accept liability for personal accidents, loss of personal belongings, or damage to the private property of other persons, during the conference and your travel, including field excursions. Participants are advised to prepare their own personal health and travel insurance for their trip.

GETTING TO TOKYO

Welcome Suica

Welcome to Tokyo! Most of the participants will arrive at Narita International Airport (NRT) (成田空港) or Haneda International Airport (HND) (羽田空港). When you arrive at the airport, before you will take a train, we highly recommend you to purchase **[Welcome Suica]**.

<https://www.jreast.co.jp/multi/en/welcomesuica/welcomesuica.html>

The Welcome Suica is an e-money card for moving around and shopping in Japan. You can use this card not only for railways but also for subways, buses, and even for grocery stores.

You can find Welcome Suica at;

- JR EAST Travel Service Center - Narita Airport Terminal 1
JR EAST Travel Service Center - Narita Airport Terminal 2・3
https://www.jreast.co.jp/e/customer_support/service_center.html#section
- JR EAST Travel Service Center - Haneda Airport Terminal 3 (Tokyo Monorail)
https://www.jreast.co.jp/e/customer_support/service_center_haneda.html#section

Transport from Narita Airport to City Centre

Narita Airport is not so close to the city centre. It takes approximately an hour by railway, two hours by bus to get to the venue.

| Transport | Approx. cost | Travel time | Frequency | Arrive at |
|------------------------------|--------------|---------------|-----------------|----------------------------|
| Train (JR Narita Express) | 3,070 JPY | 1 hour | Every hour | Tokyo Stn (東京駅) |
| Train (Keisei Sky Liner) | 2,470 JPY | 1 hour | Every 15–20 min | Keisei Ueno Stn (京成上野駅) |
| Limousine Bus | 3, 100 JPY | Up to 2 hours | Every 15–20 min | Tokyo Stn (東京駅) |

https://www.narita-airport.jp/en/access/city_access

Transport from Haneda Airport to Tokyo

Haneda Airport is a little closer to the city centre.

| Transport | Approx. cost | Travel time | Frequency | Arrive at |
|---------------------------|--------------|---------------|-------------------|--------------------------|
| Train (Keikyu Line) | 470 JPY | 30 minutes | Every few minutes | Shinagawa Stn (品川駅) |
| Train (Tokyo Monorail) | 660 JPY | 30 minutes | Every few minutes | Hamamatsuscho Stn (浜松町駅) |
| Limousine Bus | 1,250 JPY | Up to 1 hours | Every 15–20 min | Tokyo Stn (東京駅) |

<https://tokyo-haneda.com/en/access/train/index.html>



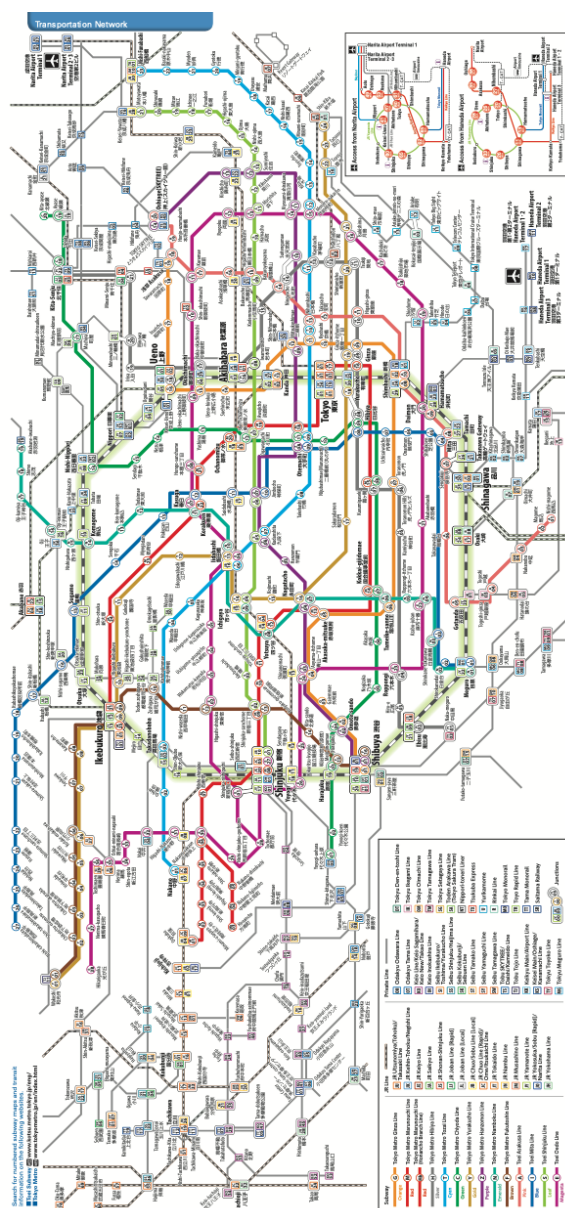
Travel within the city centre

Once you reach the city centre, subways are an easy and affordable choice to move around.

<https://www.gotokyo.org/en/plan/getting-around/subways/index.html>

Key stations:

- Reception and registration (3rd, Aug.); Otemachi station (大手町駅)
- Venue (4th – 7th, Aug.); Hongo-sanchome station (本郷三丁目駅)
(Marunouchi Line and Oedo Line;
丸ノ内線, 大江戸線)
- Banquet (6th, Aug.); Otemachi station (大手町駅)



RECEPTION AND REGISTRATION SCHEDULE

Thursday 3rd August reception and registration

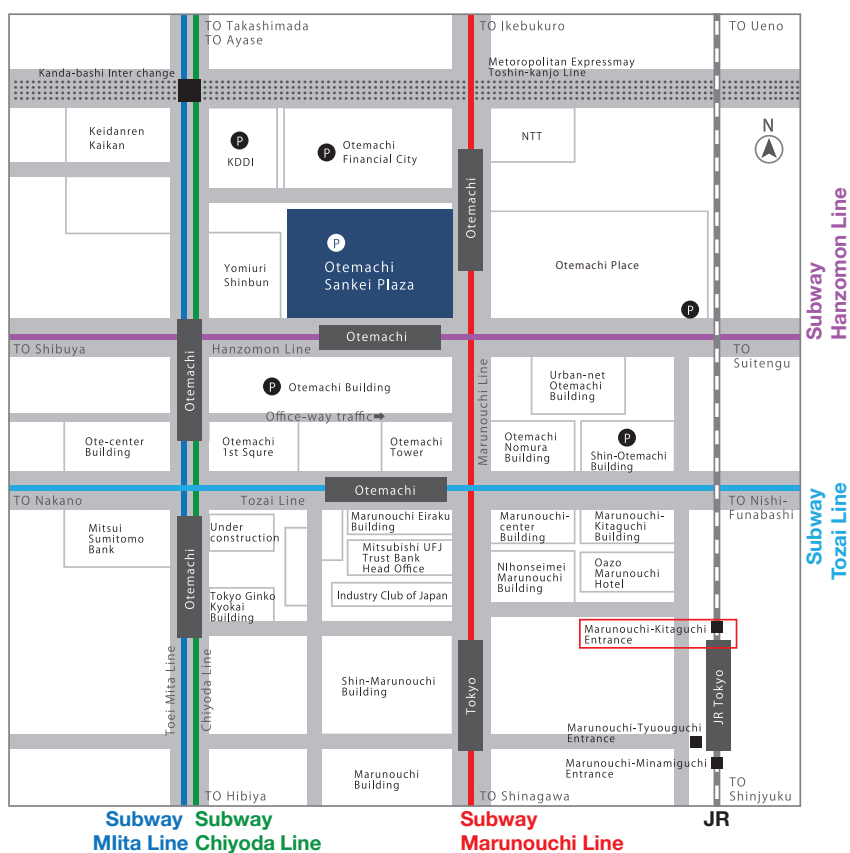
When: from 18:00 – 20:00

Where: Otemachi Sankei Plaza 4F Hall (大手町サンケイプラザ)

How to reach: Direct access from subway Otemachi Station (大手町駅) A4 and E1 Exit

7 min walk from JR Tokyo station (東京駅) Marunouchi - Kitaguchi Entrance
(丸の内北口出口)

Service: A buffet meal and drink, including Sake (Japanese rice wine)



<https://www.s-plaza.com/en/access/>

Late (Friday 4th – 7th August) registration

When: from 9:00 – 17:00

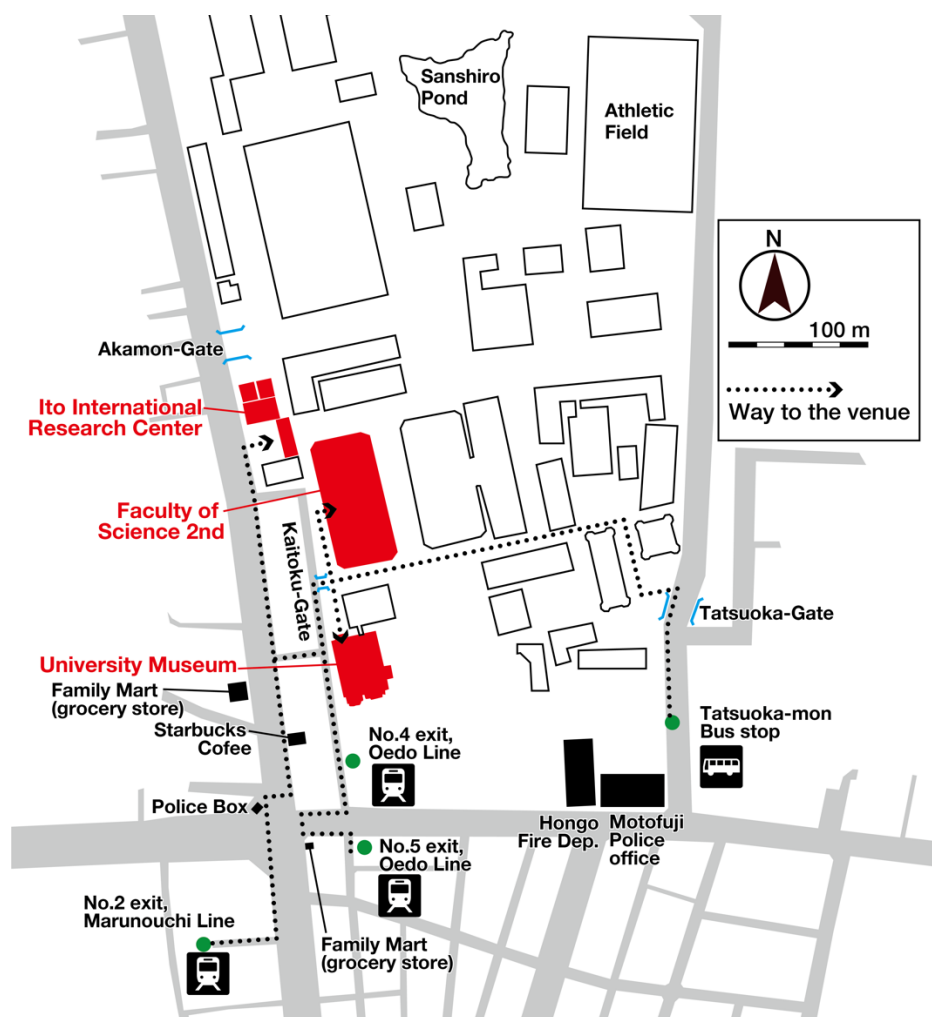
Where: Ito International Research Center on Hongo Campus, University of Tokyo (see the following section for access information)





How to reach the conference halls

- 6 min walk from No.4 exit of Hongo sanchoe Station (E-08) (本郷三丁目駅), subway Oedo Line (大江戸線)
- 8 min walk from No.2 exit of Hongo sanchoe Station (M-21) (本郷三丁目駅), subway Marunouchi Line (丸ノ内線)
- 6 min walk from Tatsuoka-mon Bus stop (龍岡門), Toei Bus (都バス) services from JR Ochanomizu (御茶ノ水駅) and Ueno stations (上野駅)



Ito International Research Center



Faculty of Science 2nd



University Museum

Restaurants around the venue

There are many nice and cosy restaurants/café's around the venue. You can find your favourites at the websites below.

- Tabelog; <https://tabelog.com/en/tokyo/A1310/A131004/rstLst/>
- TripAdvisor; https://www.tripadvisor.com/RestaurantsNear-g1066442-d1074948-Forest_Hongo_by_unito-Bunkyo_Tokyo_Tokyo_Prefecture_Kanto.html

You may be able to find Halal foods at the restaurants below*.

- Uigururyouridoran; <https://tabelog.com/en/tokyo/A1310/A131004/13284119/>
- Indoteishoku tariya; <https://tabelog.com/en/tokyo/A1310/A131004/13263015/>
- PASHA KEBAB ; <https://tabelog.com/en/tokyo/A1310/A131004/13279475/>

*APC2 organising committee does not assure that the restaurants listed provide foods exactly suitable for you. Please ask the owner/chef of the restaurants.



TIMETABLE

Download the program at the AMARYS registration site <https://amarys-jtb.jp/2ndasian/>

| August 3rd (Thursday) | |
|---|-----------|
| OTEMACHI SANKEI PLAZA Building close to the Otemachi Station | |
| 18:00–20:00 | Reception |

| | | | | |
|-------------|--|---|--|--|
| | August 4th (Friday) | | | |
| | ITO HALL Ito International Research Center | | | |
| 9:00–9:45 | Opening ceremony | | | |
| 9:45–10:30 | Plenary session 1 | | | |
| 10:30–10:45 | break | | | |
| | EVENT SPACE & GALLERY 1 Ito International Research Center | | | |
| 10:45–11:45 | Poster session core time 1 | | | |
| 11:45–13:00 | lunch break | | | |
| | ITO HALL Ito International Research | SEMINAR ROOM Ito International Research | AUDITORIUM Faculty of Science 2nd | MUSE HALL University Museum |
| 13:00–14:30 | S01 Early life, Cambrian explosion, and later macroevolutionary events | S02 Fossil record of mammals and their allies | S04 Big Data of Palaeontology and Stratigraphy | S06 Molecular palaeobiology and molecular evolution |
| 14:30–15:00 | break | | | |
| 15:00–16:00 | S01 Early life, Cambrian explosion, and later macroevolutionary events | S03 Mesozoic terrestrial ecosystem | S05 Cenozoic floristic evolution in Asia | S07 Geochemical proxies discovering palaeoecology, palaeoenvironment, and their interactions |
| 16:00–16:30 | break | | | |
| 16:30–17:30 | S01 Early life, Cambrian explosion, and later macroevolutionary events | S03 Mesozoic terrestrial ecosystem | S05 Cenozoic floristic evolution in Asia | S08 Foraminiferal biology and paleontology for understanding life, environmental histories and |

| August 5th (Saturday) | | | | |
|-----------------------|--|---|---|--|
| 9:00–10:30 | ITO HALL Ito International Research Center | | | |
| | Plenary session 2 | | | |
| 10:30–10:45 | break | | | |
| 10:45–11:45 | EVENT SPACE & GALLERY 1 Ito International Research Center | | | |
| | Poster session core time 2 | | | |
| 11:45–13:00 | lunch break | | | |
| 13:00–14:30 | ITO HALL Ito International Research | SEMINAR ROOM Ito International Research | AUDITORIUM Faculty of Science 2nd | MUSE HALL University Museum |
| | S01 Early life, Cambrian explosion, and later macroevolutionary events | S02 Fossil record of mammals and their allies | S11 Mesozoic terrestrial biota in the realm of Angiosperm diversification | S12 Analytical approaches for evolutionary morphology |
| 14:30–15:00 | break | | | |
| 15:00–16:00 | S09 Evolution of reptiles including birds | S10 Palaeozoic macroevolutionary events (IGCP653 Joint session) | S05 Cenozoic floristic evolution in Asia | S13 Linkage of Cretaceous solid earth dynamics, greenhouse climate, and response of ecosystems on land and in the oceans in Asia (IGCP679 Joint Session) |
| 16:00–16:30 | break | | | |
| 16:30–17:30 | S09 Evolution of reptiles including birds | S10 Palaeozoic macroevolutionary events (IGCP653 Joint session) | S05 Cenozoic floristic evolution in Asia | S13 Linkage of Cretaceous solid earth dynamics, greenhouse climate, and response of ecosystems on land and in the oceans in Asia (IGCP679 Joint Session) |



| | | | | |
|---------------------|---|--|---|--|
| August 6th (Sunday) | | | | |
| 9:00–9:45 | ZOOM Online | | | |
| | Plenary session 3 | | | |
| | Online oral session | | | |
| | Online poster session | | | |
| 9:45–10:30 | | | | |
| 10.30–11:30 | Online poster session | | | |
| 11:30–12:30 | lunch break | | | |
| 12:30–14:00 | AUDITORIUM Faculty of Science 2nd Building | | MUSE HALL University Museum | |
| | S14 Diversification and evolution of vascular plants | | S15 Diversity of non-tetrapod vertebrates | |
| 14:00–14:30 | break | | | |
| 14:30–15:30 | S14 Diversification and evolution of vascular plants | | S22 Open session | |
| 15:30–16:00 | break | | | |
| 16:00–17:00 | S22 Open session | | S22 Open session | |
| 18:00–20:00 | OTEMACHI SANKEI PLAZA Building close to the Otemachi Station | | | |
| | Banquet | | | |

| | | | | |
|---------------------|--|--|---|---|
| August 7th (Monday) | | | | |
| 9:00–10:30 | ITO HALL Ito International Research Center | | | |
| | Plenary session 4 | | | |
| 10:30–10:45 | break | | | |
| 10.45–11:45 | EVENT SPACE & GALLERY 1 Ito International Research Center | | | |
| | Poster session core time 3 | | | |
| 11:45–13:00 | lunch break | | | |
| 13:00–14:30 | ITO HALL Ito International Research | SEMINAR ROOM Ito International Research | AUDITORIUM Faculty of Science 2nd | MUSE HALL University Museum |
| | S16 Secondary aquatic adaptation of tetrapods | S18 Tomographic techniques and computer-aided visualization in palaeontology | S19 Diversity change and evolutionary history of radiolarians | S20 Mesozoic and Paleozoic Oceanic Anoxic Events |
| 14:30–15:00 | break | | | |
| 15:00–16:00 | S17 Triassic-Jurassic transition and biota | S22 Open session | S19 Diversity change and evolutionary history of radiolarians | S21 Secular fluctuations in microbialite development throughout Earth's history |
| 16:00–16:30 | break | | | |
| 16:30–17:00 | ITO HALL Ito International Research Center | | | |
| | General assembly | | | |
| | Closing ceremony | | | |

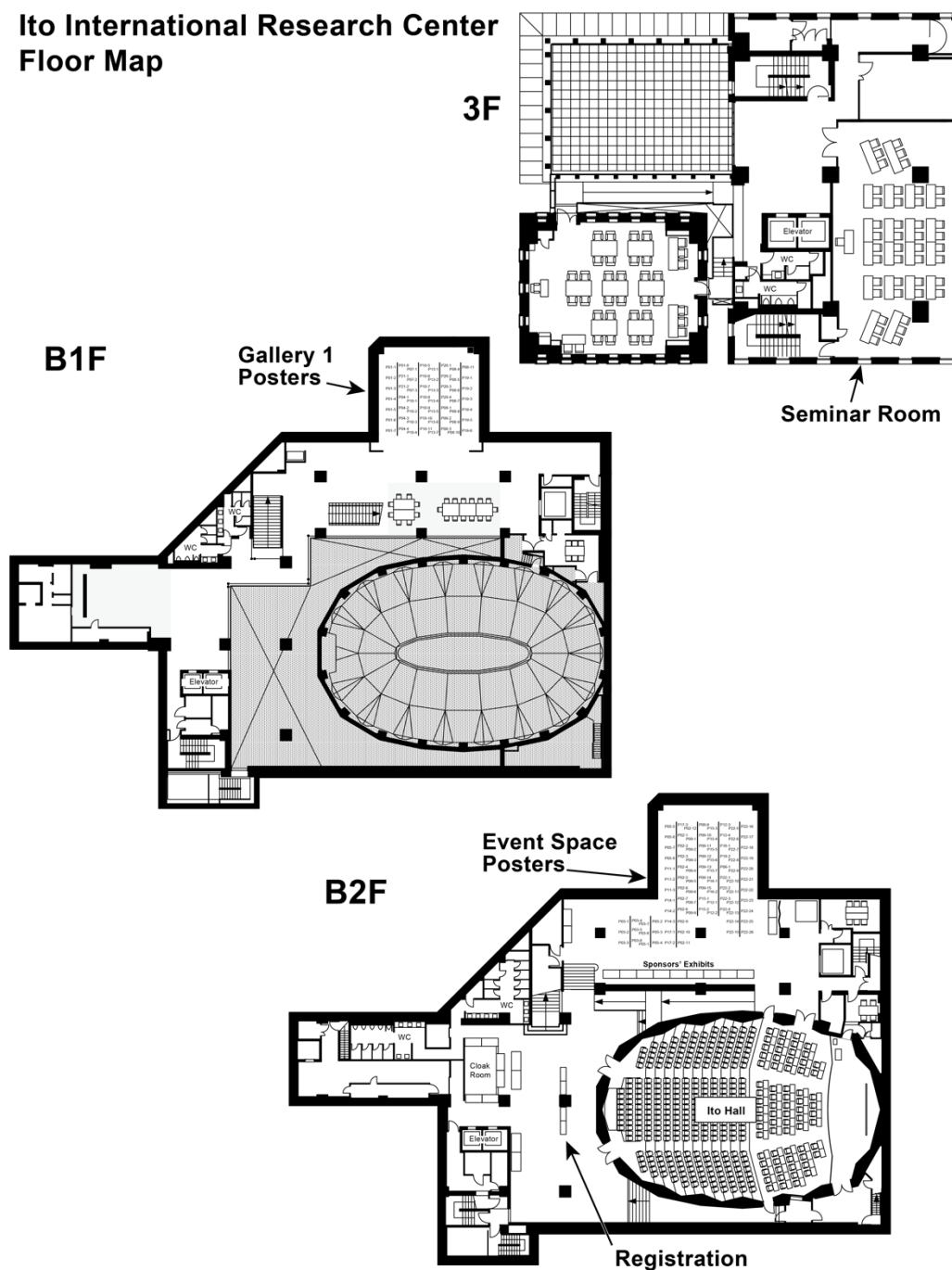
We do not provide a printed abstract volume. A pdf of the abstract volume will be posted on AMARYS system by 1st of August. Please download the pdf file before you arrive at the venue.



FLOOR MAP OF CONFERENCE HALLS

Ito International Research Center

Ito International Research Center
Floor Map



ORAL PRESENTATIONS

On-site presentation

- Please bring your own computer. Your computer will be connected to a projector in the conference hall via HDMI. If your computer does not have HDMI output, please prepare an adaptor yourself.
- The oral presentation will be 15 min including 3 min for questions. Please be punctual.

On-line presentation

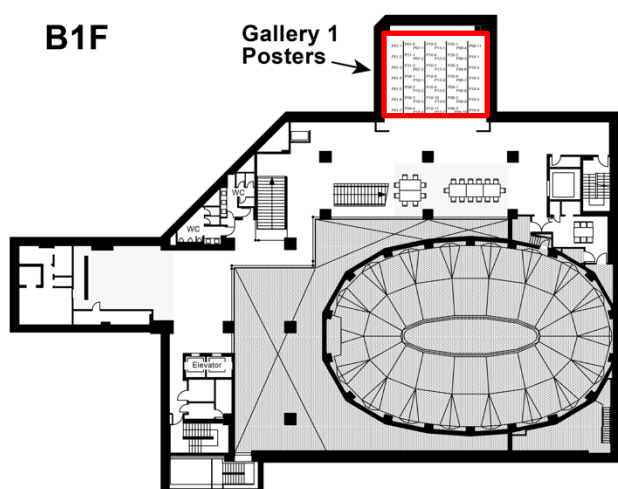
- Zoom application will be used for on-line presentations.
- A link to the Zoom meeting will be included in the AMARYS site.
- Those who are giving presentations on-line, please share your screen from your own computer.
- The oral presentation will be 15 min including 3 min for questions. Please be punctual.



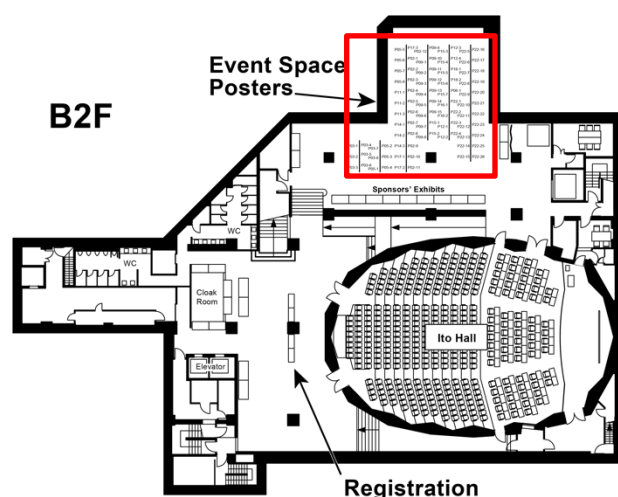
- The size of the poster board is 90 cm wide and 180 cm high (portrait). Please make sure your poster fits to this size.
- Posters can be put on the poster boards anytime during the congress.
- One poster board will be provided for one author.
- A number will be assigned to each poster (you can find your poster number on the program). Please put your poster on the designated poster board.

Posterboards arrangement

Posterboards will be placed on **B1F and B2F** at Ito International Research Center.



| | | | | |
|-------|----------------|-----------------|-----------------|--------|
| P01-1 | P01-8 P07-1 | P10-5 P13-1 | P20-1 P08-4 | P08-11 |
| P01-2 | P21-1 P07-2 | P10-6 P13-2 | P20-2 P08-5 | P19-1 |
| P01-3 | P21-2 P07-3 | P10-7 P13-3 | P20-3 P08-6 | P19-2 |
| P01-4 | P04-1 P10-1 | P10-8 P13-4 | P20-4 P08-7 | P19-3 |
| P01-5 | P04-2 P10-2 | P10-9 P13-5 | P08-1 P08-8 | P19-4 |
| P01-6 | P04-3 P10-3 | P10-10 P13-6 | P08-2 P08-9 | P19-5 |
| P01-7 | P04-4 P10-4 | P10-11 P13-7 | P08-3 P08-10 | P19-6 |



| | | | | | | |
|-------|----------------|-------|-----------------|-----------------|-----------------|--------|
| | | P05-5 | P17-3 P02-12 | P09-9 P15-3 | P12-3 P22-5 | P22-16 |
| | | P05-6 | P02-1 P09-1 | P09-10 P15-4 | P12-4 P22-6 | P22-17 |
| | | P05-7 | P02-2 P09-2 | P09-11 P15-5 | P18-1 P22-7 | P22-18 |
| | | P05-8 | P02-3 P09-3 | P09-12 P15-6 | P18-2 P22-8 | P22-19 |
| | | P11-1 | P02-4 P09-4 | P09-13 P15-7 | P06-1 P22-9 | P22-20 |
| | | P11-2 | P02-5 P09-5 | P09-14 P16-1 | P22-1 P22-10 | P22-21 |
| | | P11-3 | P02-6 P09-6 | P09-15 P16-2 | P22-2 P22-11 | P22-22 |
| | | P14-1 | P02-7 P09-7 | P15-1 P12-1 | P22-3 P22-12 | P22-23 |
| | | P14-2 | P02-8 P09-8 | P15-2 P12-2 | P22-4 P22-13 | P22-24 |
| P03-1 | P03-4 P03-7 | P05-2 | P14-3 | P02-9 | P22-14 | P22-25 |
| P03-2 | P03-5 P03-8 | P05-3 | P17-1 | P02-10 | P22-15 | P22-26 |
| P03-3 | P03-6 P05-1 | P05-4 | P17-2 | P02-11 | | |

BANQUET

The buffet-style banquet will take place on Otemachi Sankei Plaza (大手町サンケイプラザ) on Sunday 6th evening. Please come with casual attire.

When: from 18:00 through 20:00

Where: Otemachi Sankei Plaza (大手町サンケイプラザ)

How to reach: Direct access from subway Otemachi Station (大手町駅) A4 and E1 Exit

7 min walk from JR Tokyo station (東京駅) Marunouchi – Kitaguchi Entrance
(丸の内北口出口)

Please find a map on page 6.

Service: A buffet meal and drink

Ensemble of small string and wind instruments by paleo-musicologists

Entertainment performed by future paleo-heroes/heroines

- A group of young scientists from each country gives a performance
- Your adventitious attendance is very welcome, let's join us!

FIELD EXCURSIONS

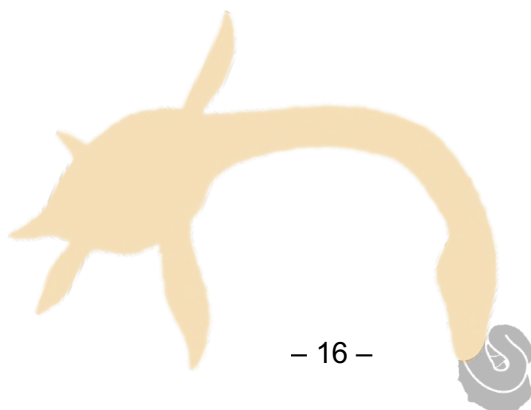
Those who will attend and are interested in field excursions, please read the following instructions carefully.

- For any reason, if you will not come to the meeting point on time, the fare you paid will not be refunded.
- If you will not come to the meeting point on time, our tour buses and aeroplanes will not wait for you. When your arrival time is expected to be delayed, please contact a tour conductor.

Tour conductor's phone and text: +81-(0)80-1693-6509

Tour conductor's email: apc2@jtb.com

- Please prepare (mobile)phone lines and internet connections by yourself during the excursions.



Chubu area course (pre-excursion)

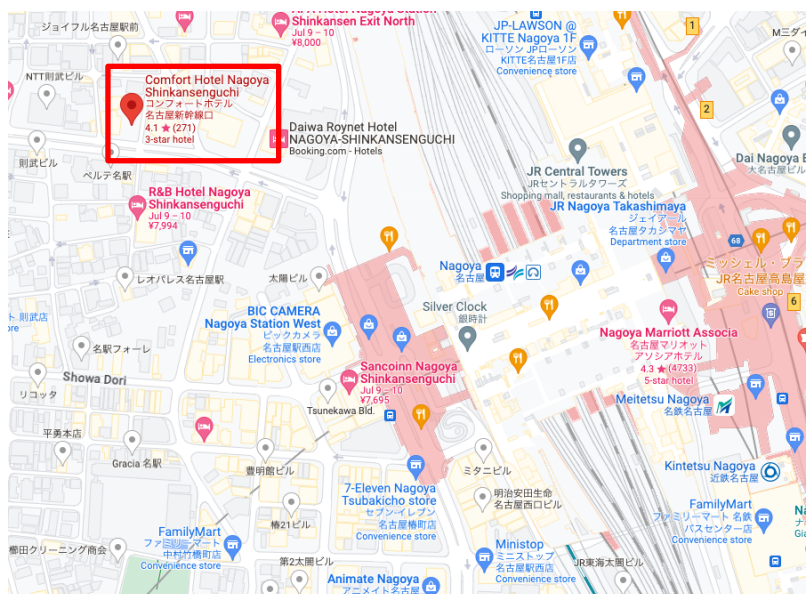
Period: 31st, July – 3rd, August

Guided by Drs. Tetsuji Onoue (Kyushu Univ.) and Yuki Tomimatsu (Kyushu Univ.)

Trip start place: The front desk of Comfort Hotel Nagoya Shinkansenguchi

Trip start time: 18:00 – 20:00 on 31st, July[§]

[§]Dinner on 31st, July is not included.



Trip end place: Nagoya Station

Trip end time: 9:40 on 3rd, August[#]

[#]Breakfast on 3rd, August is included.

[#]You should book your train/aeroplane ticket to Tokyo by yourself.

purpose of the trip: Triassic to Jurassic succession in pelagic setting in Inuyama, central Japan.



Triassic cherty deposits in Inuyama



Hokuriku area course (post-excursion)

Period: 8th, August – 11th, August

Guided by Drs. Shinichi Sano (Toyama Univ.), Atsushi Yabe (National Museum of Nature and Science, Tokyo), and Nao Kusuhashi (Ehime Univ.)

Trip start place: The bullet train (Shinkansen) ticket barrier gate of Kanazawa Station

Trip start time: 10:00 on 8th, August[†]

[†]Breakfast on 8th, August is not included.



Trip end place: Kanazawa Station

Trip end time: 17:10 on 11th, August[‡]

[‡]Dinner on 11th, August is not included.

purpose of the trip: Upper Mesozoic marine and non-marine deposits in Tetori area, northern Central Japan: A unique window into the Early Cretaceous terrestrial ecosystem in Asian eastern margin.



Ginkgo fossil from the Tetori Group
© Shiramine Inst. Palaeont., Hakusan City

Hokkaido area course (post-excursion)

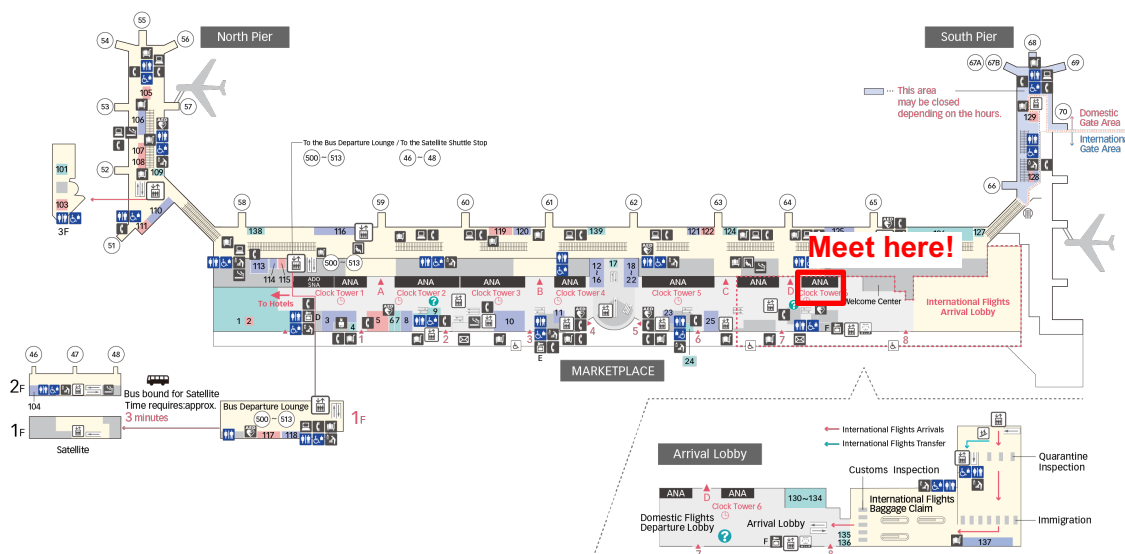
Period: 8th, August – 11th, August

Guided by Mr. Tomoki Karasawa (Mikasa City Museum) and Dr. Daisuke Aiba (Fukada Geological Institute)

Trip start place: Haneda Airport Terminal 2, 2F Terminal Lobby (North) [Group Tour counter/Clock Tower 6](#)

Trip start time: 13:30 on 8th, August^{\$\$}

^{\$\$}Lunch on 8th, August is not included.



Trip end place: Haneda Airport Terminal 2, arrival gate

Trip end time: 18:40 on 11th, August^{##}

^{##}Dinner on 10th and 11th, August are not included.

purpose of the trip: Mid- to Upper Cretaceous Yezo Group in Hokkaido: Ammonites and other marine fossils.

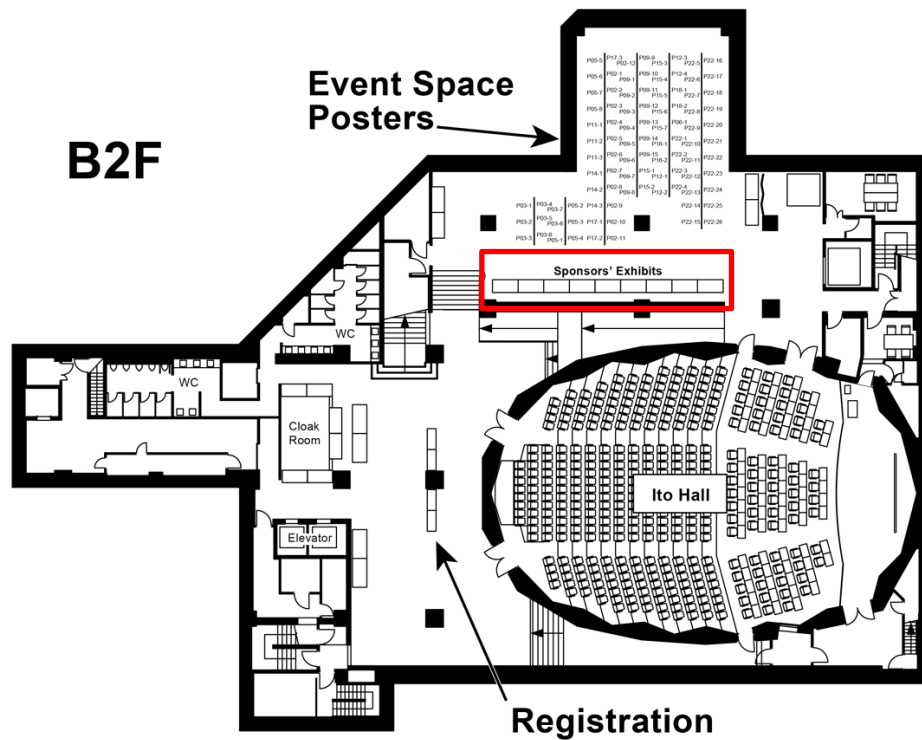


Gigantic inoceramid bivalves from the Yezo Group

EXHIBITIONS

Exhibitor's desks will be arranged at B2F, Ito International Research Center. Please visit the following exhibitor's desk.

- Zoological Letters by the Zoological Society of JAPAN



REGISTRATION

- Register on-line at www.APC2.org; the registration is scheduled to open in February, 2023.

| | Early (by March 31, 2023) | Full (by July 15, 2023) | Last minute (after July 16, 2023) |
|--------------------------------------|--|--|---|
| Regular | 30,000 JPY | 40,000 JPY | 50,000 JPY |
| Student | 40,000 JPY | 45,000 JPY | 25,000 JPY |
| Virtual (On-line-Day only) | 5,000 JPY | | 15,000 JPY |

CANCELTATION AND REFUND POLICY

Please note that all cancelatons are subject to a cancelation fee.

Requests for refunds must be received via email to apc2@jtb.com by the dates indicated below. If you have any inquiries, please send email to: apc2@jtb.com

<By June 1st, 2023>

Regardless of the types of registration (early, full, student, on-line), you are eligible for a full refund minus cancelation fee.

<After June 1st, 2023>

There will be no refunds.



INTERNATIONAL SCIENTIFIC COMMITTEE

Co-Chairs:

Kazuyoshi ENDO University of Tokyo, Japan
Renbin ZHAN Nanjing Institute of Geology and Palaeontology, CAS, China

Members (listed alphabetically):

Dany AZAR Lebanese University, Lebanon
Rinchen BARSBOLD Institute of Palaeontology, MAS, Mongolia
Tao DENG Institute of Vertebrate Palaeontology and Palaeoanthropology, CAS, China
Hiroshi NISHI Fukui Prefectural University, Japan
Min HUH Korea Dinosaur Research Centre, Korea
Dong-Chan LEE Chungbuk National University, Korea
Makoto MANABE National Museum of Nature and Science, Japan
Kazuyoshi MORIYA Waseda University, Japan
Rei NAKASHIMA National Institute of Advanced Industrial Science and Technology, Japan
Tatsuo OJI Nagoya University, Japan
Muhammad QASIM University of Peshawar, Pakistan
Tze Tshen LIM Geology Department, Universiti Malaya, Malaysia
Sergey ROZHNOV Palaeontological Institute, RAS, Russia
Tamaki SATO Kanagawa University, Japan
Khishigjav TSOGTBAATAR Institute of Palaeontology, MAS, Mongolia
Mongkol UDCHACHON Mahasarakham University, Thailand
Takao UBUKATA Kyoto University, Japan
Yongdong WANG Nanjing Institute of Geology and Palaeontology, CAS, China



JAPANESE ORGANISING COMMITTEE

Chair:

Tamaki SATO..... Kanagawa University

Vice-chairs:

Takao UBUKATA..... Kyoto University

Rei NAKASHIMA..... National Institute of Advanced Industrial Science and Technology

Secretary:

Kazuyoshi MORIYA..... Waseda University

Members (listed alphabetically):

Kazuyoshi ENDO University of Tokyo

Yoichi EZAKI..... Osaka Metropolitan University

Tatsuya HIRASAWA..... University of Tokyo

Rie S. HORI..... Ehime University

Takuya IMAI..... Fukui Prefectural University

Yukio ISOZAKI University of Tokyo

Robert JENKINS..... Kanazawa University

Aya KUBOTA..... Chuo University

Azumi KUROYANAGI Tohoku University

Julien LEGRAND Shizuoka University

Makoto MANABE..... National Museum of Nature and Science, Tokyo

Atsushi MATSUOKA Niigata University

Hiroshi NISHI..... Fukui Prefectural University

Harufumi NISHIDA..... Chuo University

Koji NOSHITA..... Kyushu University

Tatsuo OJI..... Nagoya University

Megumi SAITO-KATO National Museum of Nature and Science, Tokyo

Shin-ichi SANO University of Toyama

Takenori SASAKI University of Tokyo

Asuka SENTOKU..... University of the Ryukyus

Noritoshi SUZUKI..... Tohoku University

Hideko TAKAYANAGI..... Tohoku University

Takanobu TSUIHIJI National Museum of Nature and Science, Tokyo

Atsushi YABE National Museum of Nature and Science, Tokyo





KEY DATES

- *JST = Japan Standard Time, GMT +9:00
- Deadline for regular registration: July 31, 2023, 23:59 JST

CONTACT ADDRESS

If you have any inquiries, please send email to: apc2@jtb.com



The 2nd Asian Palaeontological Congress (APC2) is funded by
the NOVARTIS Foundation (Japan) for the Promotion of Science and
<https://japanfoundation.novartis.org/en/index.html>

the Tokyo Geographical Society.
<http://www.geog.or.jp/english.html>

The 2nd Asian Palaeontological Congress (APC2) is supported by

The Fukada Geological Institute,
https://fukadaken.or.jp/?page_id=2827

The Zoological Society of Japan,
<http://www.zoology.or.jp/en/>

Fukui Prefectural Dinosaur Museum
<https://www.dinosaur.pref.fukui.jp/en/>

Kuzuryu Fossil Lab GA ONO (Ono City Board of Education)
[https://www.city.ono.fukui.jp/kosodate/bunka-
rekishi/hakubutsukan/kanko/kyoudoshiryokan/kyoudosiryokan.html](https://www.city.ono.fukui.jp/kosodate/bunka-
rekishi/hakubutsukan/kanko/kyoudoshiryokan/kyoudosiryokan.html)

Mikasa City Museum
<https://www.city.mikasa.hokkaido.jp/museum/detail/00005540.html>

Shiramine Institute of Paleontology
<https://hakusan-geo.jp/en/area/422/>